



**Come to  
Korea and  
Find your  
own dream!**

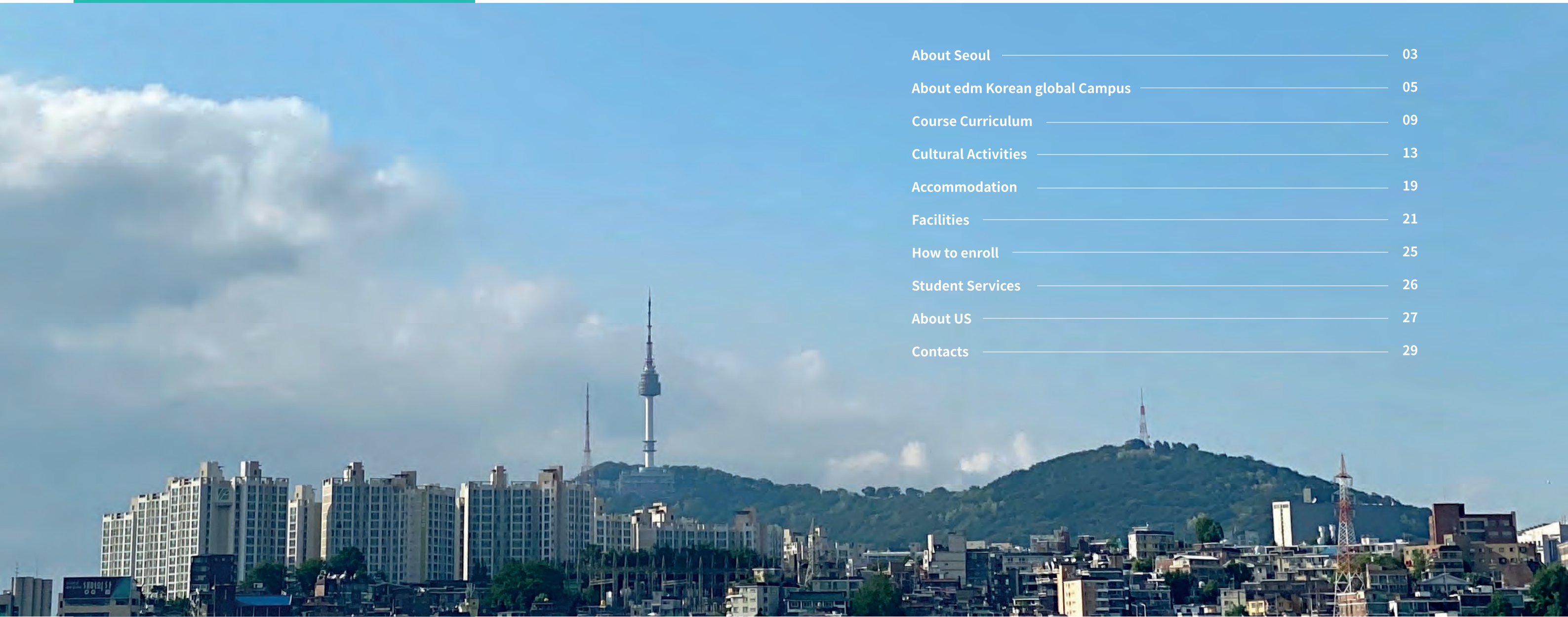


**edm Korean Global Campus**  
4th floor, 16 Gangnam-daero 84-gil, Gangnam-gu, Seoul  
TEL. +82 2 6956 0909 / EMAIL. info@edmkorean.com / SITE. <https://www.edmkorean.com>

What could be  
more exciting  
than learning  
Korean in Korea?

## CONTENTS

About Seoul	03
About edm Korean global Campus	05
Course Curriculum	09
Cultural Activities	13
Accommodation	19
Facilities	21
How to enroll	25
Student Services	26
About US	27
Contacts	29





# ABOUT SEOUL


Welcome to Seoul  
Where Tradition Meets Innovation


Seoul, the dynamic capital of South Korea, is a city that beautifully encapsulates the essence of a nation steeped in rich history while embracing the future with open arms. Nestled along the Han River and surrounded by stunning mountain ranges, Seoul is a captivating blend of modern skyscrapers, ancient palaces, bustling markets, and a vibrant pop culture scene. Seoul is a city that never sleeps, where ancient traditions blend seamlessly with modern innovation

Whether you're a history enthusiast, a foodie, a K-Pop fan, or simply seeking a unique adventure, Seoul has something to offer everyone. Come and experience the magic of Seoul for yourself, where the past meets the future in a harmonious dance of culture and technology.

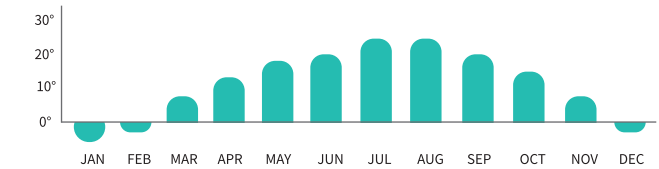


## OVERVIEW OF SEOUL

 **POPULATION**  
Approx. 10,000,000

 **AIRPORTS**  
Incheon International 50 mins  
Gimpo International 30 mins

 **TEMPERATURE**





# Welcome to edm Korean Global Campus

## Your Gateway to South Korea and Beyond!

Are you ready to embark on an exciting journey into the heart of South Korea's vibrant culture? Look no further than edm Korean Global Campus, your premier destination for learning the Korean language and unlocking the wonders of this beautiful country.

Conveniently situated in the bustling metropolis of Seoul, just a stone's throw away from the iconic Gangnam station, edm Korean Global Campus is perfectly positioned to help you explore this incredible city while mastering the Korean language. Our cozy, modern facilities provide a welcoming atmosphere for learners of all levels, making it easier than ever to dive into your Korean adventure.



## What makes edm Korean Global Campus special?



### 9 consecutive years of receiving the South Korean Education Brand Award in the IELTS education category

From 2015 to 2023, we have been awarded the title of the best education brand in the IELTS category for nine consecutive years. We have received top-notch evaluations for our courses, as well as our close management, as an officially certified IELTS test center by the British Council.



### edm Education is partnered with the British Council, a quality education center from the UK

We are reputable and accredited organizations with a proven track record of excellence in the education or related sectors. We have passed the British Council's strict partnership conditions and are operating an IELTS test center together.



### edm Meet-up, Language exchange program

Our 'Language Fusion' program is designed to bring together Korean students on their IELTS journey and foreign students who are passionate about learning the Korean language. We provide a comfortable and welcoming atmosphere for language enthusiasts to connect, communicate, and expand their horizons.





### edm IELTS

edm IELTS(www.edmclass.com) has been recognized as the top brand in the IELTS education sector for seven consecutive years. It is the largest specialized education institution in Korea for the IELTS exam. Serving approximately 4,300 students annually, it offers classes both in-person and through online courses.

### HANA Education / HANA School of Arts edm Portfolio

As the only UAL Awarding Body accredited institution in Korea, Hana Education (www.hana-edu.co.kr) is affiliated with the globally renowned art university, University of the Arts London (UAL). Additionally, through its portfolio school (portfolio.edm-art.com), it provides education for art students aiming to study abroad. They offer classes to approximately 400 students annually.

## edm Global Campus

edm Global Campus offers some of the largest study programs in Korea, catering to various aspects of international education preparation. It runs academies for IELTS exam preparation and specialized foundation courses for overseas studies, particularly for those looking to pursue an arts-related major. Additionally, edm Global Campus is recognized as the only official admission partner for UAL (University of the Arts London) in Korea.



In this vibrant exchange, you'll have the opportunity to learn and practice both Korean and English (or any other foreign language) with like-minded individuals. It's not just about language; it's about sharing experiences, making friends, and appreciating the beauty of cultural diversity.

We encourage you to engage in conversations, ask questions, and make meaningful connections that will enrich your language skills and broaden your horizons. So, let's embark on this exciting journey together, where language knows no boundaries, and friendships know no limits!



# Korean Language Course

# COURSE CURRICULUM

You will develop a deep appreciation for all things Korean such as food and culture. edum Global Campus offers a multitude of class levels for learners to develop their skills. From Beginner to Advanced, after a lesson or two you will develop the ability to communicate in Korean. In the classroom you will learn useful and practical skills that will give you the confidence to communicate in Korean.



## General Korean 15

The main purpose of 'General Korean 15' is to develop language proficiency and practical communication skills in familiar and everyday topics. Above all, our Korean classes allow you to learn essential skills such as 'shopping,' 'navigation,' and 'ordering' right from the moment you arrive in Korea.



## General Korean 23

The 'General Korean 23' process emphasizes reviewing the vocabulary and grammar learned in the morning, with a focus on their communication functions. This process extends the vocabulary and grammar learned in the morning to teach how they are used in actual daily life situations.



## TOPIK Preparation 15

This TOPIK course is designed for individuals who wish to strategically prepare for the TOPIK exam. This includes those hoping to study at domestic universities, individuals seeking employment at domestic and international Korean companies and public institutions, as well as those in need of the certification for various visa applications.



## Business Korean

Business Korean is a Korean language course designed for foreigners working in Korean-related businesses or requiring Korean for business purposes. You will learn expressions needed in actual business settings and situations.

## K-POP Korean

Learning Korean through K-pop uses K-pop song lyrics to make learning Korean pronunciation, vocabulary, grammar, and more easy and enjoyable.

## K-DRAMA Korean

Learning Real Korean Expressions through K-drama goes beyond traditional lessons to teach colloquial expressions used by native Koreans.

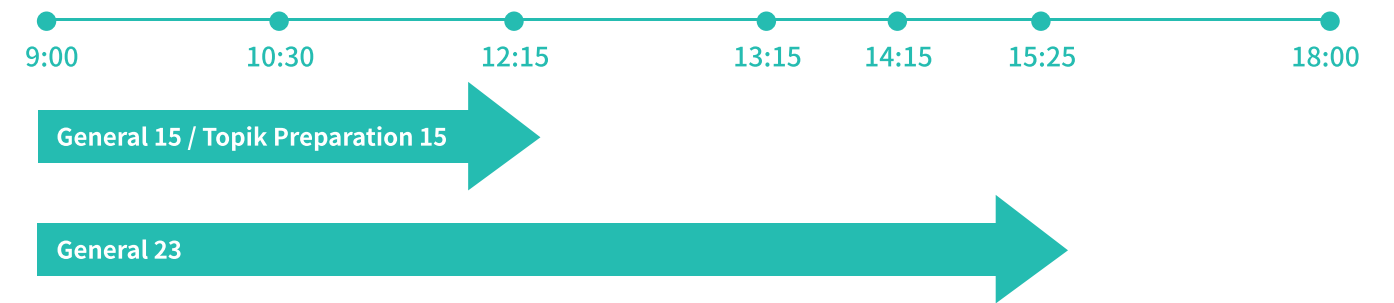
## 1:1 Customized Class

edm Korean's personalized lessons are designed to meet the learner's specific needs. This is particularly recommended for those who cannot participate in regular classes or require additional lessons outside regular class hours. Furthermore, we offer customized curricula based on individual learning goals and interests.



## TIME TABLE

\* 10:30 Break time 15 mins  
\* 12:15 Lunch break 1 hour  
\* 14:15 Break time 10 mins



\*There is no afternoon class on Fridays.

## KOREAN COURSE LEVEL

Course	Foundation	Beginner	Elementary	Intermediate	Advanced	Proficiency
General15						
General23						

## EXTRA LESSONS

Course	Hours	Start date
General Korean 15	Mon-Fri, 15 hours per week	every Monday
General Korean 23	Mon-Fri, 23 hours per week	every Monday
Topik Preparation	Mon-Fri, 15 hours per week	on the 1st day of every month
Business Korean	2 days 4 hours per week	on the 1st day of every month
K-pop Korean	4 times a week for 2 hours each, total 8 hours	inquiry
K-Drama Korean	4 times a week for 2 hours each, total 8 hours	inquiry
1:1 Customized Class	Schedule Determination through Consultation	Schedule Determination through Consultation

\* If Monday is a holiday, classes will begin on Tuesday.



# KOREAN CULTURAL CLASSES

# CULTURAL ACTIVITIES

The most effective way to learn Korean is to be immersed into its culture by participating in Cultural Classes at edm Korean Global Campus.

Through learning K-Pop dance steps and song lyrics, K-Drama scripts, as well as cinema and other forms of media students can develop their listening and speaking skills. There is so much more to Korean culture than just song and dance.

Enjoy learning about Korean traditions and customs by going out for some Chi-maek (chicken and beer) or Korean BBQ while hanging-out with friends.



## edm Special Cultural Activity! edm Meet-up



**edm Meet-up!** edm is not only one of Korea's most renowned study abroad institutions but has also successfully operated as an IELTS-specialized language school for nearly two decades. We have excelled in both offline and online classes. Drawing on our wealth of experience, we continuously strive to provide effective methods for language acquisition to our students.

At ed:m IELTS, every year over 2,000 students work diligently to achieve their goal of securing a high English language score for their overseas studies. 'edm Meet-up,' our language exchange program, brings together Korean students aspiring to learn English and foreign students eager to learn Korean. It offers a unique opportunity for students with a shared language learning goal to meet and converse in a relaxed and informal setting, promoting a sense of accomplishment.

We meet every Thursday evening, as the week's classes wind down. Here, you can make new friends, enjoy chicken and beer, and engage in diverse conversations. Make good friends in Korea as you explore a variety of discussions!







## ENTERTAINMENT

This is an activity where you can directly experience and immerse yourself in various aspects of Korean culture. Learn K-pop dance and engage in diverse cultural experiences.



### K-pop dance

Learning K-pop music dance.



### SK T.um

Experiencing the Metaverse at a Future Technology Exhibition.



### Korean cooking

Trying to make a variety of Korean dishes yourself.



### K-beauty class

Taking various makeup and beauty-related classes.



### Noraebang

Experience the exciting karaoke culture unique to Korea.



### Camping

Enjoy camping in Korea while savoring the beauty of nature!



### Amusement park

Experience both thrilling rides and cute headbands.



### Cycling along the Han river,

Bicycle trip at Seoul's most famous park, Han River Park!

## SIGHTS TO SEE

Visiting famous Korean tourist destinations like Bongeunsa Temple, Gyeongbokgung Palace, Namsan Tower, and many more. An activity that allows you to experience Korean history and culture firsthand. Capture beautiful moments in these stunning locations!



### Gyeongbok Palace

Visiting South Korea's largest palace.



### Hanok Village

Exploring a traditional Korean village.



### Bongen Temple

Visiting well-known Buddhist temples in Seoul.



### National Museum

Learning about history at the National Museum.



### Movie Theatre

Experiencing a South Korean movie theater.



### Namsan Tower

Enjoying the Seoul skyline from Namsan Tower.



### Folk Museum

Experiencing various aspects of traditional culture at a folk museum.



### War Museum

Learning about the history of the Korean War at the War Museum.





## THINGS TO CREATE

Curious about the Dalgona game from "Squid Game"? Wondering how to make kimchi? This activity allows you to experience Korean culture. It's a great opportunity to make your own kimchi and chopsticks!



### Making Ginseng Liquor

Making traditional alcohol with ginseng.



### Making Mother of Pearl

Trying to make your own chopsticks.



### Kimchi Making

Making Korea's national dish, kimchi.



### Paper-craft

Trying to create hand-crafts using hanji, traditional Korean paper.



### Making Dalgona

Making dalgona, as seen in Squid Game.



### Brewing Makgeolli

Trying to make traditional Korean rice wine, makgeolli.

## KOREAN LIFE

In our academy, we have many Korean students studying English too! You can enjoy a relaxed and fun atmosphere while sharing chicken and beer (치맥) with Korean students, which provides a natural way to learn each other's languages. Making new friends is an added bonus!



### edm Meet-up

Language exchange program with edm Korean students.



### Conversation Club

Engaging in free-form discussions with diverse students.



### Mart tour

Browsing a South Korean market.



### Korean Night Party

Enjoying a pleasant evening with new friends.



### Movie day

Watching a movie together with friends at edm Korean.



### Reading day

Learning pronunciation while reading Korean books.



# ACCOMMODATION

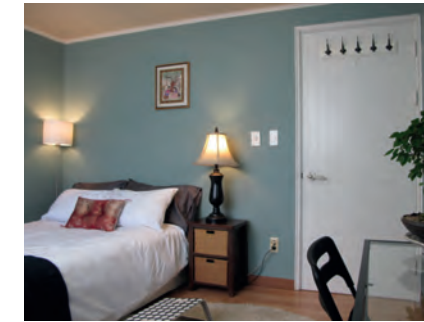
We know that finding the right place to live is an important part of experience. We offer accommodations to provide a pleasant, comfortable, secure and affordable for students within a short distance from our campus. Trying to decide where to live while studying at edm Korea's? Here is the places of accommodation to help you choose which one will work best for you.



## HOMESTAY

Distance to School : 20-40 mins

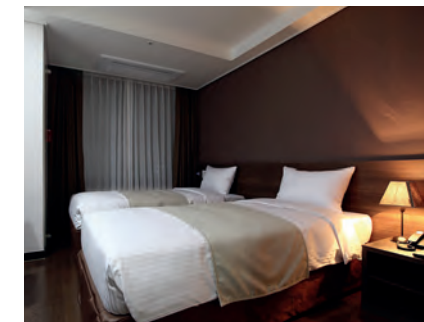
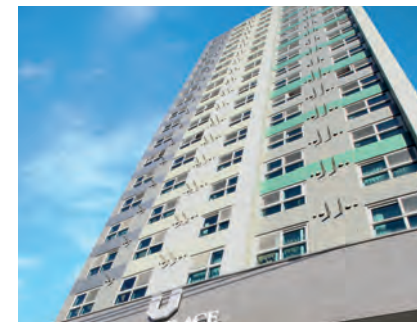
Stay with a local family and get a real feel for Korea life with plenty of additional language practice. Standards are high, so this option is suitable for anyone ready to make the most of the opportunity.



## SERVICED RESIDENCE

Distance to School : 10-20 mins

This type of accommodation provides services similar to hotels and is suitable for those seeking private and excellent service. However, it tends to be more expensive compared to other lodging options.



## GOSIWON

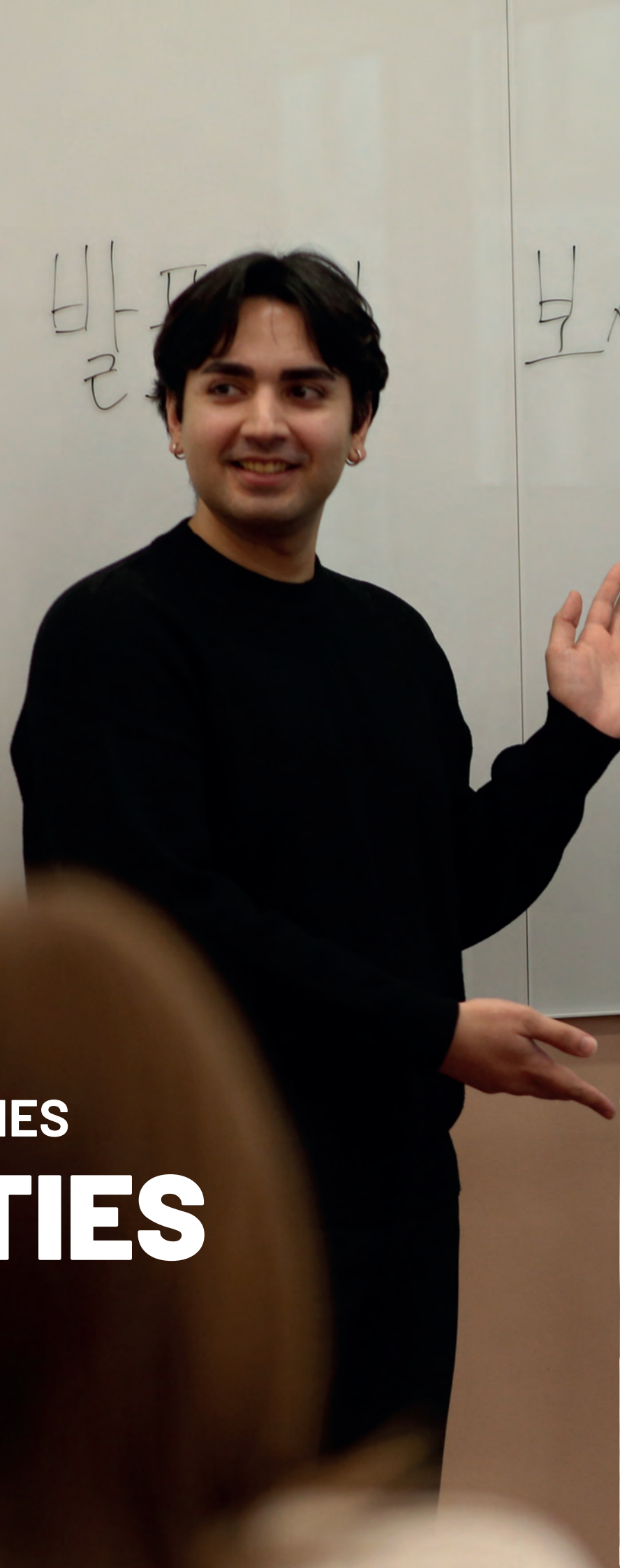
Distance to School : 10-20 mins

This is the most budget-friendly type of accommodation in Korea where you can have a private space. You may have to share a kitchen and bathroom. It has very limited private space, but the prices are low.





# SCHOOL FACILITIES FACILITIES



## School Highlights

- Comfortable and modern classrooms
- Located in the bustling Gangnam station area, Seoul's largest transportation hub
- Friendly staff and excellent instructors
- Academy Welfare Services: Coffee, water, charging, and Wi-Fi

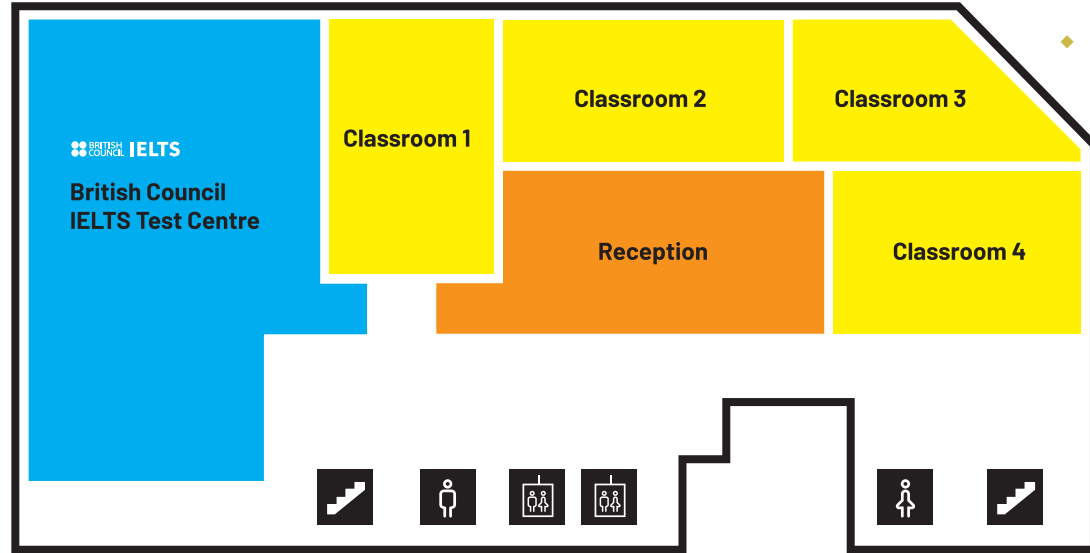
## Around the school

- Gangnam station (line 2, Sinbundang line) 2mins – on foot
- Convenience Store 1min
- Banks Banks with global ATMs 2mins
- Numerous cafes and restaurants nearby
- Gangnam main streets 3mins

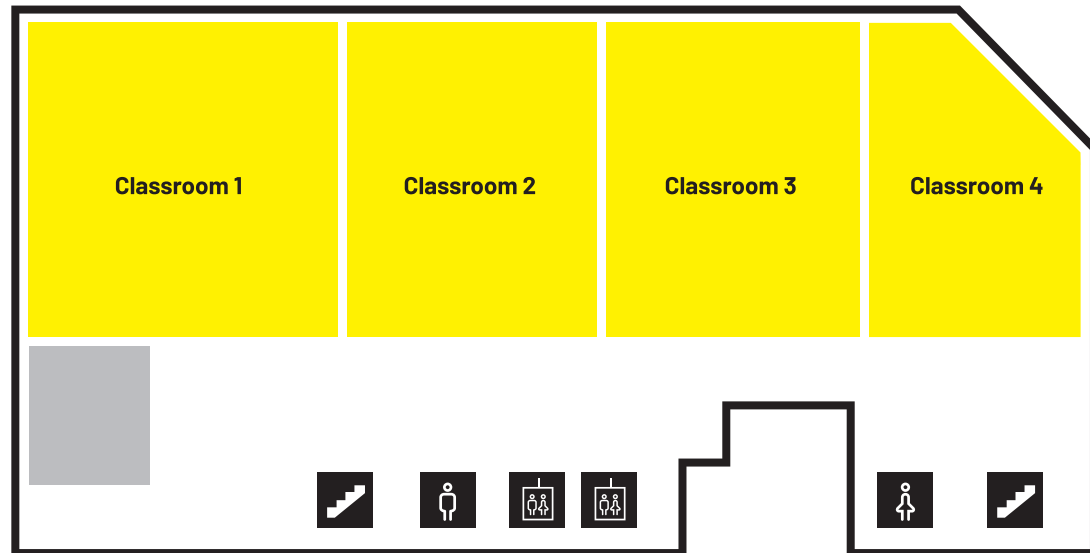




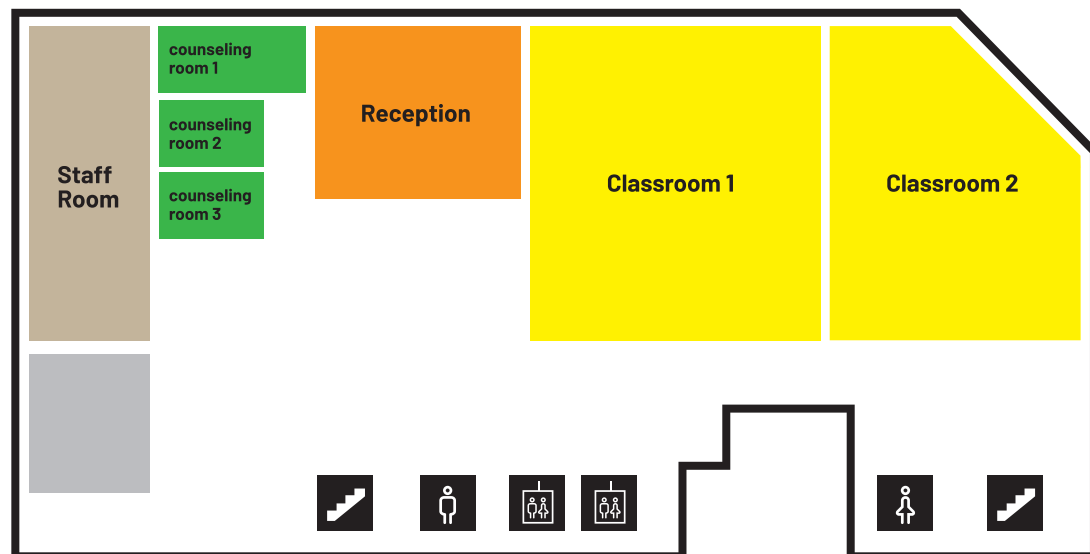
4F



5F



6F



## edm Korean Global Campus Facilities

Visit the Student services Centre to access a range of services, support and advice. We are here to help you get what you need quickly and easily, at one convenient location. You can access a range of student services including

### SCHOOL FACILITIES

Elevator, Air conditioning, Heating, Wi-Fi (free), Self-study center, Student lounge, Pc, Water purifier

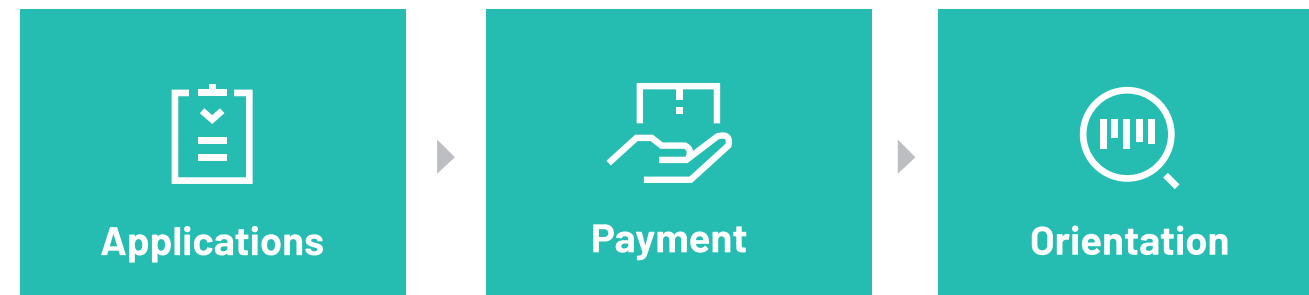
- CLASSROOM 10
- STUDENTS appx. 200
- INSTRUCTORS 10
- PROJECTOR 3
- TOTAL SEATING CAPACITY 250
- FIRE EVACUATION FACILITIES Available
- PHOTOCOPIER 3
- SELF-STUDY ROOM Available
- CCTV 8





# HOW TO ENROLL

## Registration Process



Fill out the application form on our website. We will reply with the result via-email.

Wait for an email confirming that your payment was received.

On your first day, you will attend a series of orientation events on campus.

## Visa Information

Students should enter the country with a TOURIST visa or a working holiday visa if they are from non-visa-exempt countries.



# STUDENT SERVICES

Providing essential information for life in Korea and supporting activity-related services.

- Individual Online level test
- Personalised map study plan
- Weekly Interview&review
- Regular 1:1 academic counselling
- Accommodation
- Course Information
- General inquiries
- help desk
- Hospital information
- Public transportation information
- Course extension
- Pick up Service
- Booking activities (baseball, K-pop concert, movie ...)
- Welcome gifts





# REVIEWS FROM OUR STUDENTS



**Olga Kolobikhina (Russia)**

I liked that there was a lot of speaking time during the classes, and it was good to have time to talk with friends, so I could make friends.



**Florencia Correa Anguita (Chile)**

Since we can learn how to use the grammar we've learned in daily life, I feel like I can use it right away when I leave the classroom.



**Vance Jordan James (US)**

Because we talk a lot during class, I can make friends too. I will come back with friends next year.



**Kovalenko Anastasiia (Russia)**

It didn't feel like studying because it was so much fun. It felt like playing.



**Levchenko Valentyna (Ukraine)**

We're going to Gyeongbokgung today, and the lesson today was about transportation and directions. I'm going to try to use what I've learned while going there.



**Mariia Firsova (Ukraine)**

It was good that there were separate stages for learning Korean sentences. Learning Korean after learning separately made it easier to understand.



**Ajrhaida Oumaima (Morocco)**

Since they teach the most necessary parts first while living in Korea, it wasn't difficult.



**Farbod Maziyar (Iran)**

I like that I can experience Korean culture activities that I can't do alone during activity time. And it's more fun with friends!



**Houser Ryan Jesse (US)**

I like the variety of activity activities. Especially, the Dalgona experience is fascinating, delicious, and so much fun!



# WE ARE edm GROUP

## Our Slogan

우리는 고객의 꿈을 사랑하고, 고객이 그 꿈을 이룰 수 있도록 응원한다.

**"We love our customers' dreams, and we support them in achieving those dreams."**

Education cannot be defined as one single entity; it can encompass various diverse experiences. [ed:m] aims to evolve into a brand that is filled with all of our customers' experiences.

These experiences can come from me, mom, mate, music, mentor, and more.

[ed] represents education, and [m] signifies the extension into experiences.

[ed:m] implicitly conveys 'education is m\_.'

## Our Business

### Study Abroad Consulting

We are cultivating study abroad experts who provide accurate and purpose-specific study abroad information in an era of abundant knowledge. We aim to enable the design of study plans and lives by trained professionals in the field.

### Art Study Abroad Consulting

We, as an Authorized Regional Office entrusted with the review of all applications related to admissions in the fields of art and design, provide support for prospective students applying to the university in matters concerning admission.

### Art Study Abroad Portfolio Academy

We guide students to discover their individuality and potential by providing personalized curricula with expert instructors, enabling them to create their portfolios.

### IELTS Academy

We are a language academy prepared with a team of top-notch instructors to help students realize their dreams of studying abroad. We offer the best IELTS lessons.

### edm Korean Global Campus

What could be more exciting than learning Korean in Korea itself? At edm Korea, we offer specialized intensive learning. Experience and learn about Korea through systematic classes and a variety of enjoyable activities.



# CONTACTS

## Contacts

We welcome your feedback and inquiries!

Please don't hesitate to reach out to us.

Our office hours are from 9:00 am to 6:00 pm, Monday to Friday.

### edm Korean Global Campus

4th floor, 16 Gangnam-daero 84-gil,  
Gangnam-gu, Seoul

Tel. +82-2-6956-0909

Email. [info@edmkorean.com](mailto:info@edmkorean.com)

Site. <https://www.edmkorean.com>

[marketing@edmkorean.com](mailto:marketing@edmkorean.com)



## Overseas branch/office

### LONDON

+44 074 4280 4261

10 York Rd London SE1 7ND

Working Hours: 10:00 AM to 5:00 PM

(Closed on weekends and holidays)

### TAIPEI

+886 2 2711 3911

106 Taipei City, Da'an District, Section 4,

Zhongxiao E Rd, 166號4樓

Working Hours: 10:00 AM to 7:00 PM

(Closed on weekends and holidays)