

COME TO KOREA AND FIND YOUR OWN DREAM

edm
Korean
Global Campus

Learn Korean Live Korean!

edm aims to help students achieve the best of the education but also have fun learning Korean.
edm supports students' desires to learn Korean and also to really live like one.
The company name edm stands for education to multiplying into further experiences.

Welcome to edm Korean Global Campus

Become Korean, Live Korean!

Are you ready to embark on an exciting journey into the heart of South Korea's vibrant culture? Look no further than edm Korean Global Campus—the ultimate destination for learning the Korean language and discovering the wonders of this beautiful country. Conveniently located in the bustling metropolis of Seoul, just steps away from the iconic Gangnam Station, edm Korean Global Campus is perfectly situated to help you explore this dynamic city while mastering the Korean language. Our cozy, modern facilities provide a welcoming environment for learners of all levels, making it easier than ever to begin your Korean adventure.



Welcome to Seoul

Where Tradition Meets Innovation



Seoul is the heart of Korea where you can enjoy not only the modernized society but also the hidden traditional places of Korea. You can visit and experience all things from K-pop to food, cultural activities to studying the history as well. Come experience the heart beat of Korea and technology.

OVERVIEW OF SEOUL

POPULATION

| | |
|-------------|------------|
| South Korea | 51,750,000 |
| Seoul | 9,500,000 |

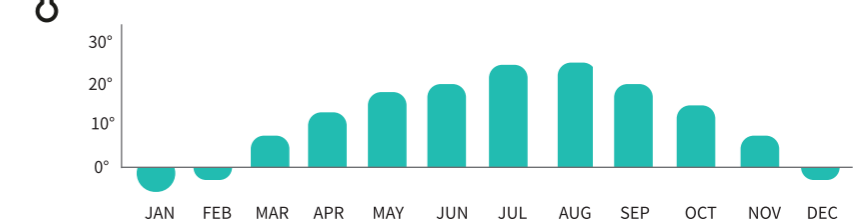
AIRPORTS

| | |
|-----------------------|--------|
| Incheon International | 50mins |
| Gimpo International | 30mins |

PRICE

| | |
|--------|-----------|
| TAXI | 4,800 won |
| SUBWAY | 1400 won |
| BUS | 1,400 won |

TEMPERATURE



| | |
|--------|------------|
| COFFEE | 4500 won |
| MEAL | 10,000 won |

SCHOOL FACILITIES

Start learning Korean with your friends in a clean, modern facility in Gangnam, Seoul's largest commercial and transportation hub.



School Highlights

- Comfortable and modern classrooms
- Located in the bustling Gangnam station area, Seoul's largest transportation hub
- Friendly staff and excellent instructors
- Academy Welfare Services: Coffee, water, charging, and Wi-Fi, Microwave, Air conditioning, Heating, Self-study centre, Student lounge, Library



Convenient & Exciting

Lifestyle Around Gangnam

Gangnam has everything you need for a comfortable and enjoyable life. The area offers something for everyone, from convenient stores and popular restaurants serving delicious meals to modern cinemas and vibrant entertainment options. Its bustling streets are perfect for exploring and experiencing the dynamic energy of the city.



Daiso
다이소

You can buy almost everything from here. From stationary to food, household goods and other necessary things



Olive Young
올리브영

You can buy face masks and the newest make ups



Restaurants
맛집

There are so many restaurants around Gangnam station.



Lotte Supermarket
롯데슈퍼

Not only can you buy fruits and vegetables, you can also buy other plates and pans too.



Kakao Store
카카오 스토어

Do you like Kakaotalk things? You can buy stationary things from ipad to pencil cases, and souvenirs as well.



Noraebang & Arcade
노래방 및 오락실

Sing Korean songs, pop song and play at the arcades.



Movie Theater
영화관

a space for screening movies for audiences, and providing entertainment and refreshments.



SAMSUNG COEX
삼성 코엑스

A major convention and shopping hub in central Seoul with stores, dining, and entertainment.



Traditional market
전통시장

a unique cultural experience and diverse local products.

Korean Language Course

Learn Korean,

Live Korean!

Immerse yourself in the rich tapestry of Korean culture, from its vibrant cuisine to its unique traditions. At edm Korean Global Campus, we offer a wide range of class levels designed to help learners thrive, whether you’re starting with the basics or honing advanced proficiency. From your very first lesson, you will acquire practical and essential skills to confidently communicate in Korean.

Our dynamic and engaging classroom experience ensures that every moment of learning brings you closer to mastering the language and immersing yourself in the culture.

edm Korean TIME TABLE

| Time | Mon | Tue | Wed | Thu | Fri |
|-------------|--------------------------------------|-------------------------------|--------------------------------------|-------------------------------|----------|
| 09:00~09:50 | General Korean / Intensive Korean | | | | |
| 10:00~10:50 | | | | | |
| 11:00~11:50 | | | | | |
| 12:00~13:00 | Lunch | | | | |
| 13:00~13:50 | Intensive Afternoon Electives | Intensive Afternoon Electives | Intensive Afternoon Electives | Intensive Afternoon Electives | No class |
| 14:00~14:50 | Pronunciation Rules & Reading Skills | TOPIK II Preparation | Pronunciation Rules & Reading Skills | TOPIK II Preparation | |
| 19:00~21:00 | | Business Korean | | Business Korean | |

- * Classes are available for students aged 19 and older
- * Each class consists of 5 to 9 students, with a maximum capacity of 12.
- * 1 Lesson = 50 mins.
- * Afternoon Elective classes in the Intensive Korean program are available according to level.
Pronunciation Rules & Reading Skills (beginner+) TOPIK II Preparation (Elementary+)
- * Business Korean will be offered with a minimum of 2 students.

- Public Holiday**
1. Classes start every Monday, or Tuesday if Monday is a holiday.
 2. No classes are held on Korean public holidays, and makeup classes are not provided.
 3. No refunds for lessons missed on public holidays.

Korean COURSE LEVEL

| Course | Foundation | Beginner | Elementary | Intermediate | Advanced | Proficiency |
|------------------------------------|------------|----------|------------|--------------|----------|-------------|
| General Korean Intensive Korean | | | | | | |

- Course Duration by Level**
- * Foundation : 1 or 2 weeks
 - * Beginner : 5 weeks
 - * Elementary : 6 weeks
 - * Intermediate : 10 weeks
 - * Advanced : 10 weeks
 - * Proficiency : 10 weeks



Regular Course

This regular course is designed for anyone to begin learning Korean with ease. It provides a systematic foundation in reading, writing, speaking, and listening.

General Korean

From absolute beginners to learners who can already read and speak Hangul, this course is designed for everyone. Classes focus on practical Korean you can use right away—from shopping and getting around to ordering food—so you can feel confident the moment you arrive in Korea. Learn it, speak it, and live it: build everyday confidence with our practical Korean course!

Intensive Korean

The Intensive Korean course combines morning General Korean classes with afternoon electives. In the morning, students build a solid foundation in Korean through General Korean classes, while in the afternoon, they can take Pronunciation & Reading or TOPIK Preparation classes according to their level. With focused learning, this program helps students improve their Korean skills effectively in a short period of time.

Evening Course

This evening Korean course is designed for working professionals and learners with busy schedules.

Business Korean

It focuses on practical Korean for real business settings, including meetings, email writing, presentations, and negotiation expressions, helping you develop professional communication skills. Held in a relaxed atmosphere after work, the course not only improves your Korean proficiency but also builds confidence in workplace communication.



Active Korean

Active Korean is an optional course in addition to General Korean.



Pilates and PT classes are all conducted as 1:1 personalized lessons. The first class schedule will be arranged by edm Korean, and afterward, you can conveniently coordinate future sessions directly with your instructor between Monday and Friday, 1pm to 6pm. (Each session is 1 hour long, with two sessions per week.)

The K-POP Cover Dance class is a group lesson where you can have fun learning dance together with friends. It is held twice a week (Tuesday & Thursday), with each session lasting 1 hour and 30 minutes. Class times are set according to the dance course you choose, and please note that changing courses later may be difficult.

K-POP Cover Dance

In the afternoon, join a special program where you can experience Korea's iconic culture through our K-pop Cover Dance class. Alongside your Korean studies, you'll learn the latest K-pop choreography and immerse yourself fully in Korean culture. Enhance your language skills while gaining confidence through music and dance, and enjoy connecting with friends from all around the world!

1:1 Pilates

In the afternoon, stay healthy and balanced through our Pilates class. With structured movements and breathing exercises, this special program helps you improve posture, build strength, and relieve stress all at once. Alongside your Korean studies, train both body and mind while enjoying a more energetic and refreshing day!

1:1 Personal Training [PT]

In the afternoon, enjoy 1:1 Personal Training (PT) for a fully customized fitness experience. Our professional trainers design programs tailored to your strength and goals, helping you effectively improve fitness, body balance, and overall health. Alongside your Korean studies, this premium program supports both body and mind, allowing you to enjoy a healthier and more energetic life in Korea!

edm Korean Junior Summer Camp

About the Camp

edm Korean Junior Summer Camp provides young learners from around the world with a unique opportunity to immerse themselves in the Korean language and culture. Students enjoy engaging in language lessons alongside hands-on cultural activities, exciting excursions, and unforgettable experiences that make learning both fun and meaningful.

Camp Highlights

Immersive Korean Language Adventure

- Participate in interactive classes
- Develop skills in speaking, listening, reading, and writing in Korean
- Learn Korean through fun, hands-on activities

Dive into Korean Culture, Fun, Friends & Unforgettable Memories

- Experience the excitement of K-pop dance and music
- Explore traditional arts, crafts, and Korean cuisine
- Discover Korea's iconic historical sites and vibrant modern hotspots
- Build lifelong friendships with students from around the world

Safe, Supportive, and Comfortable

- Stay in modern, well-equipped dormitories
- Support from friendly, experienced camp staff

Camp info

- Location: Seoul, South Korea
- Ages: 15–19 years old
- Camp Period: July & August (2 weeks each)



Cultural Activities

In our cultural activities, you will make various crafts, food and watch k-dramas & movies with us. You will also go to outdoors with us but what is the best is that we will teach you how to speak in these various situations.



Korean Entertainment

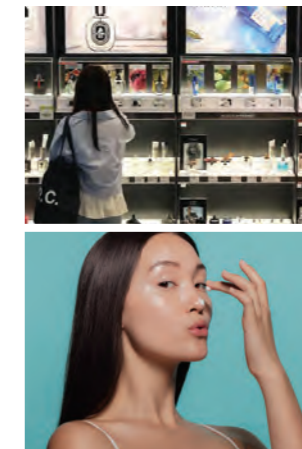
Immerse yourself in Korean culture through engaging activities. Experience K-pop dance and enjoy a variety of cultural programs.



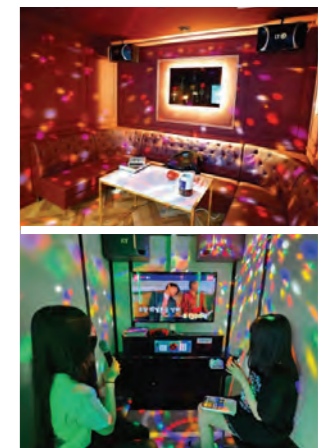
K-pop dance



SK T.um



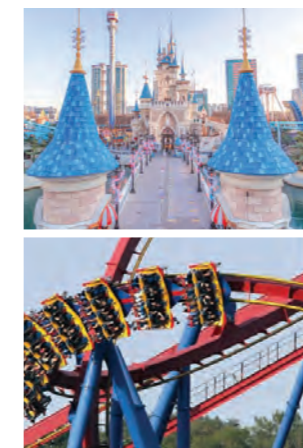
K-beauty class



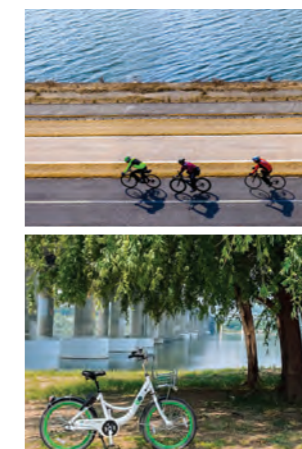
Noraebang



Camping



Lotte World



Picnic & Cycling

SIGHTS TO SEE

Experience Korea's rich history and culture firsthand by visiting iconic destinations like Bongjeonsa Temple, Gyeongbokgung Palace, and Namsan Tower. Create unforgettable memories and capture stunning moments at these breathtaking locations.



Gyeongbok Palace



Hanok Village



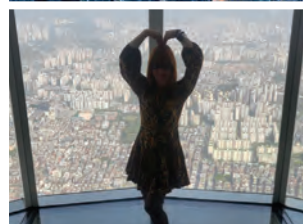
Bongjeon Temple



National Museum



Seoul Sky Tower



Namsan Tower



Folk Museum



War Museum

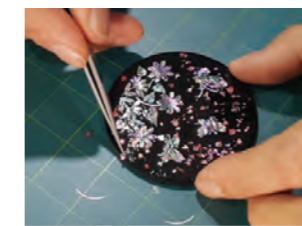


K-Food Making Time

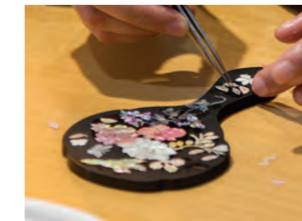
We will be making, Korean K-snowflake bingsu, mini kimbaps, dalgona, and makgeolli.



Making Ginseng Liquor



Making Mother of Pearl



Kimchi Making



Mini kimbap



Making Dalgona



Brewing Makgeolli



Korean Red-bean Snowflake Bingu





Korean Life

Many Korean students are also learning English! Enjoy a relaxed and fun atmosphere while sharing chicken and beer (치맥) with them. It's a natural way to practice languages and make new friends at the same time!



Special Cultural Activity! edm Meet-up



Do you want to practice speaking with native Koreans?

Join edm Meet-Up, the perfect opportunity to interact with our Korean students! These students, who will also be going abroad through our edm Language Exchange Program, are eager to learn English. Make new friends and improve your language skills by practising Korean phrases with your native Korean language buddies!



Monthly Activities

Our Activities Change every month and therefore you can choose a combination of outing activities, K-Food, Korean craft making and decorating things. These are not compulsory but you can choose them.

| May, 2024 | | June, 2024 | |
|-----------|----|------------|----|
| 01 | 02 | 01 | 02 |
| 03 | 04 | 03 | 04 |
| 05 | 06 | 05 | 06 |
| 07 | 08 | 07 | 08 |
| 09 | 10 | 09 | 10 |
| 11 | 12 | 11 | 12 |
| 13 | 14 | 13 | 14 |
| 15 | 16 | 15 | 16 |
| 17 | 18 | 17 | 18 |
| 19 | 20 | 19 | 20 |
| 21 | 22 | 21 | 22 |
| 23 | 24 | 23 | 24 |
| 25 | 26 | 25 | 26 |
| 27 | 28 | 27 | 28 |
| 29 | 30 | 29 | 30 |
| 31 | | 31 | |

ACCOMMODATION

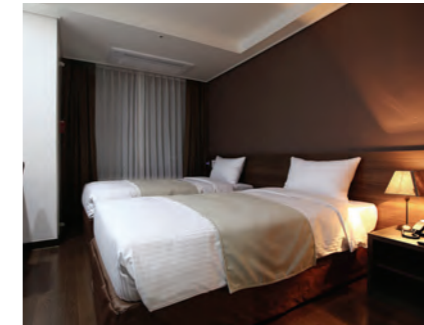
Finding the right place to live is an important part of your experience. We offer accommodations that are comfortable, secure, and affordable. Not sure where to stay while studying? Here are our recommended accommodation options to help you choose the best fit for your needs.



SERVICED RESIDENCE

Distance to School : 10-20 mins

This type of accommodation provides services similar to hotels and is suitable for those seeking private and excellent service. However, it tends to be more expensive compared to other lodging options.



HOMESTAY

Distance to School : 30-50 mins

Stay with a local family and get a real feel for Korea life with plenty of additional language practice. Standards are high, so this option is suitable for anyone ready to make the most of the opportunity.



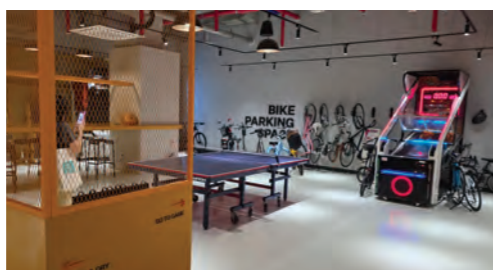
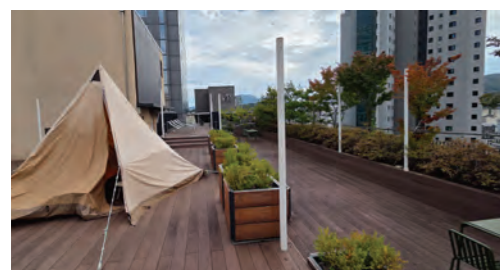
Exceptional Comfort

with first-class facilities in Seoul

edm Episode Residence

Distance to School : 12-15 mins

edm Episode Residence is located in the heart of Gangnam, offering exceptional transportation convenience and top-class facilities. Just a 15-minute walk from the school, it provides the perfect environment for both daily life and academic pursuits.



While each resident enjoys a private and independent living space, they also have access to a variety of shared amenities, including a relaxing lounge, a communal cooking studio, a fully equipped training room, and a spacious rooftop with an open view. In addition, a thorough visitor management system and advanced smart security ensure a safe and worry-free living environment at all times.

- + Free shared kitchen
(Free tableware, cooking utensils, and ice)
- + Entertainment area
- + Outdoor rooftop
- + Free fitness room
- + Free massage chairs and relaxation area
- + Free study room

Facilities

- Bathroom & Shower Room
- Kitchen
- Free Wi-Fi
- Refrigerator
- Furniture & Appliances
- TV
- Bed & Wardrobe
- Desk & Chair
- Microwave
- Washing Machine & Dryer
- Hairdryer
- Air Conditioner

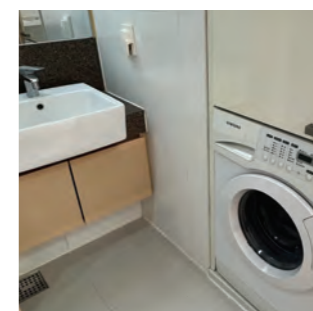
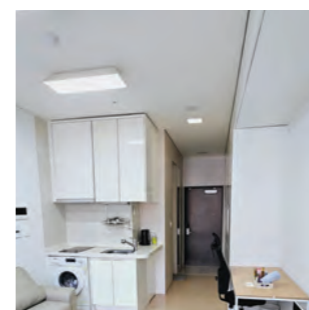
edm Premium Residence

Distance to School

1 min



edm Premium Residence is located just a minute's walk from the school, and only 3 minutes from Gangnam Station. The studio is surrounded by numerous restaurants, various amenities, and a safe environment, making it the ideal location.



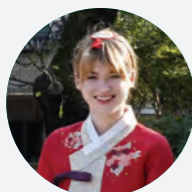
Facilities

- Bathroom & Shower Room
- Kitchen
- Free Wi-Fi
- Refrigerator
- Furniture & Appliances
- TV
- Bed & Wardrobe
- Desk & Chair
- Microwave
- Washing Machine & Dryer
- Hairdryer
- Air Conditioner

Key Features

- Spacious and Independent Personal Space
- Variety of Convenient Amenities
 - 1) Well-established security and Safety Systems
 - 2) High Standard of Living Quality
 - 3) Strategic Location with Convenient Transportation and Nearby Commercial Facilities

REVIEWS FROM OUR STUDENTS



Lauren Jean Wickersham

This hagwon is wonderful! The teachers are all so kind and really want you to succeed! I had studied at SNU's LEI before and had a difficult time with keeping up. This school is much more individualized with a lot more focus on speaking but in a really supportive environment. They have 2 activities a week that are included in your tuition as well, like going to palaces or going out to eat and you get to practice korean in the real world with support of your classmates and teachers instead of just memorizing in a classroom. The campus is nice and new, and there is also snacks & coffee and tea & wifi available. All the staff are very kind and accommodating and make sure you're understanding everything!



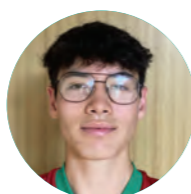
Vladyslava Bokova

I'm currently enrolled in edm Korean and taking general course! So far I'm satisfied with everything! It's been a week but i already noticed a progress. I'm also happy that we're able to practice speaking at school. There are also activities every week, like visiting touristy places or cooking together, it's a great bonding! I can definitely recommend this school



Laila

I really liked that studying wasn't boring, the teachers and administrators were very friendly and supportive..



Taegan

With friendly staff, engaging lessons and a supportive environment, EDM is a great place to study Korean.



Mariia Firsova

It was good that there were separate stages for learning Korean sentences. Learning Korean after learning separately made it easier to understand.



Chun-Hao Lin

edm Korean Global Campus 是我學習韓語的地方！老師們非常專業跟熱情，教學方式生動有趣，讓我在短時間內提升了韓語能力。學習氛圍讓我感到輕鬆。課程內容很豐富加上每週下午的課後活動。對於想學韓語的我來說，這裡真的是一個很棒的選擇！推薦！



Chu-Yun Teng

第一次來韓國學韓文，在台灣已經陸續學了半年多左右，來這裡一個月，學的比台灣的還紮實雖然有很多的字需要背，但老師都很好很和善，教室也非常新，離配合的宿舍也超級近，地點就在江南站一號出口，這邊的環境我蠻喜歡的，因為相對鬧中取靜，超市也近，讓我在學習過程當中方便很多



Chen Jung

第一次來韓國上韓文課這裡的老師教的很好 Grace.민지老師、朴老師都很漂亮，又很親切下次一定還要再來上課



Angelika Lagoa

Depuis une semaine ici je suis très satisfaite des cours et de l'ambiance . L'emplacement est bon également . Si vous cherchez une bonne école pour apprendre le coréen à prix raisonnable n'hésitez pas . De nombreuses activités également en dehors des cours



Andrea Angelina Krasko

I love these courses. The teacher is very nice and friendly. They will teach you Korean well. The material is explained clearly, and the lessons are well-organized. Thanks to this course, I've gained the ability to understand and speak Korean in a short time!



Vita

I had an absolutely amazing time here. I not only learned a lot from my Korean teacher, but I also got to experience various activities through edm!



Maude Pierre-Louis

Après une semaine de cours à edm korean global campus, j'aime beaucoup cette école. Les professeurs sont dynamiques et les cours bien construits pour s'entraîner à parler la langue ! Les locaux sont aussi très agréables.



TOMOYO YAMASHITA

I really enjoyed this school, so I'd like to come back soon, more long time!



Farbod Maziyar

I like that I can experience Korean culture activities that I can't do alone during activity time. And it's more fun with friends!



Levchenko Valentyna

We're going to Gyeongbokgung today, and the lesson today was about transportation and directions. I'm going to try to use what I've learned while going there.



Huai-Chen Huang

I have been here for 4 weeks. Everything is great! The teacher is friendly. I also have the great experience.



Karine Lubany

I started studying Korean at edm Korean Global Campus last week and have been loving it. The pace is perfect for my learning ability. The Korean classes they provide are giving me the confidence to speak Korean outside in my daily life living in Korea. I would definitely recommend this hagwon if you're thinking of studying Korean!

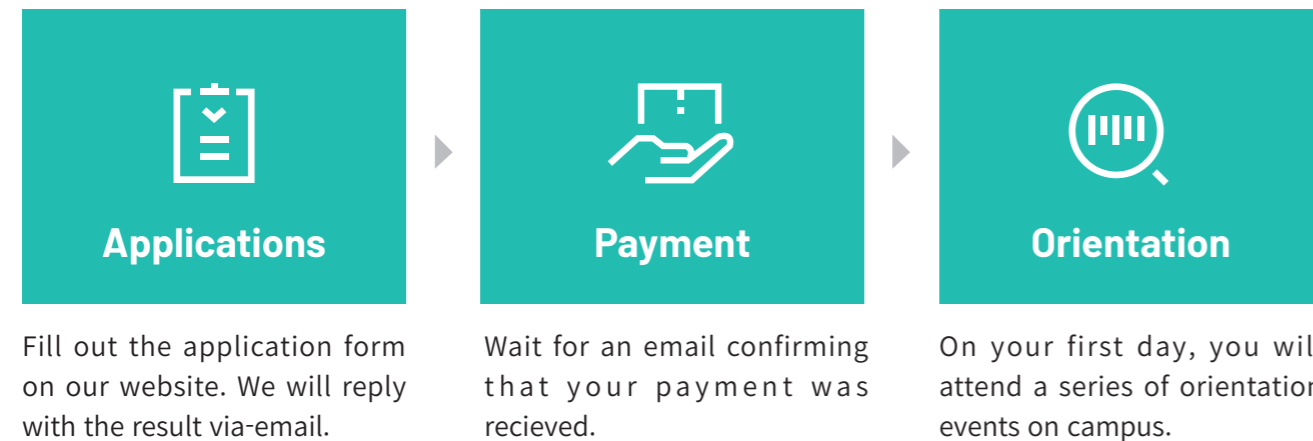


Yi-Jung Lu

I stay here two weeks for Korean lesson, this is my second time coming to Korea for Korean study, it's a special experience, teacher also very nice.

HOW TO ENROLL

Registration Process



Visa Information

Students should enter the country with a TOURIST visa or a working holiday visa if they are from non-visa-exempt countries.



STUDENT SERVICES

Providing essential information for life in Korea and supporting activity-related services.

- Individual Online Level Test (Entry test-before class)
- Accommodation
- Course Information
- General inquiries
- Help desk
- Hospital information
- Public transportation information
- Course extension
- Pick up Service(paid service)
- Booking activities (baseball, K-pop concert, movie ...)
- Welcome gifts



Our organization is committed to creating a diverse and inclusive environment where all learners are welcome, regardless of race or religion.

*We do not tolerate any form of discrimination or bias.

*Our goal is to ensure every learner can thrive in a safe, respectful space. Should any issues arise, we are dedicated to taking prompt and appropriate action. Together, we celebrate diversity and grow as a community.





**WE ARE
edm GROUP**

Contacts

We welcome your feedback and inquiries!
Please don't hesitate to reach out to us.
Our office hours are from 8:00 am to 5:00 pm, Monday to Friday.



ed m IELTS

edM IELTS(www.edmclass.com) has been recognized as the top brand in the IELTS education sector for seven consecutive years. It is the largest specialized education institution in Korea for the IELTS exam. Serving approximately 4,300 students annually, it offers classes both in-person and through online courses.



HANA Education / HANA School of Arts
/ edm Portfolio

As the only UAL Awarding Body accredited institution in Korea, Hana Education (www.hana-edu.co.kr) is affiliated with the globally renowned art university, University of the Arts London (UAL). Additionally, through its portfolio school (portfolio.edm-art.com), HANA provides education for art students to go study abroad. They offer classes to approximately 400 students annually.



**9 consecutive years of receiving
the South Korean Education Brand Award
in the IELTS education category**

From 2015 to 2023, we have been awarded the title of the best education brand in the IELTS category for nine consecutive years. We have received top-notch evaluations for our courses, as well as our close management, as an officially certified IELTS test center by the British Council.



edm Education is partnered with
the British Council,
a quality education center from the UK

We are reputable and accredited organizations with a proven track record of excellence in the education or related sectors. We have passed the British Council's strict partnership conditions and are operating an IELTS test center together.

edm Korean Global Campus

4th floor, 16 Gangnam-daero 84-gil,
Gangnam-gu, Seoul

Tel. +82-2-6956-0909
Email. info@edmkorean.com
Site. www.edmkorean.com
Instagram. edm_korean_global_campus
Youtube. edm Korean global campus
Kakaotalk. edmkorean
Watsapp. +82 10-2621-1378



Overseas branch/office

LONDON

+44 074 4280 4261
10 York Rd London SE1 7ND
Working Hours: 10:00 AM to 5:00 PM
(Closed on weekends and holidays)

TAIPEI

+886 2 2711 3911
106 Taipei City, Da'an District, Section 4,
Zhongxiao E Rd, 166號4樓
Working Hours: 10:00 AM to 7:00 PM
(Closed on weekends and holidays)



edm Korean Global Campus

4th floor, 16 Gangnam-daero 84-gil, Gangnam-gu, Seoul

TEL. +82 2 6956 0909 / EMAIL. info@edmkorean.com / SITE. <https://www.edmkorean.com>